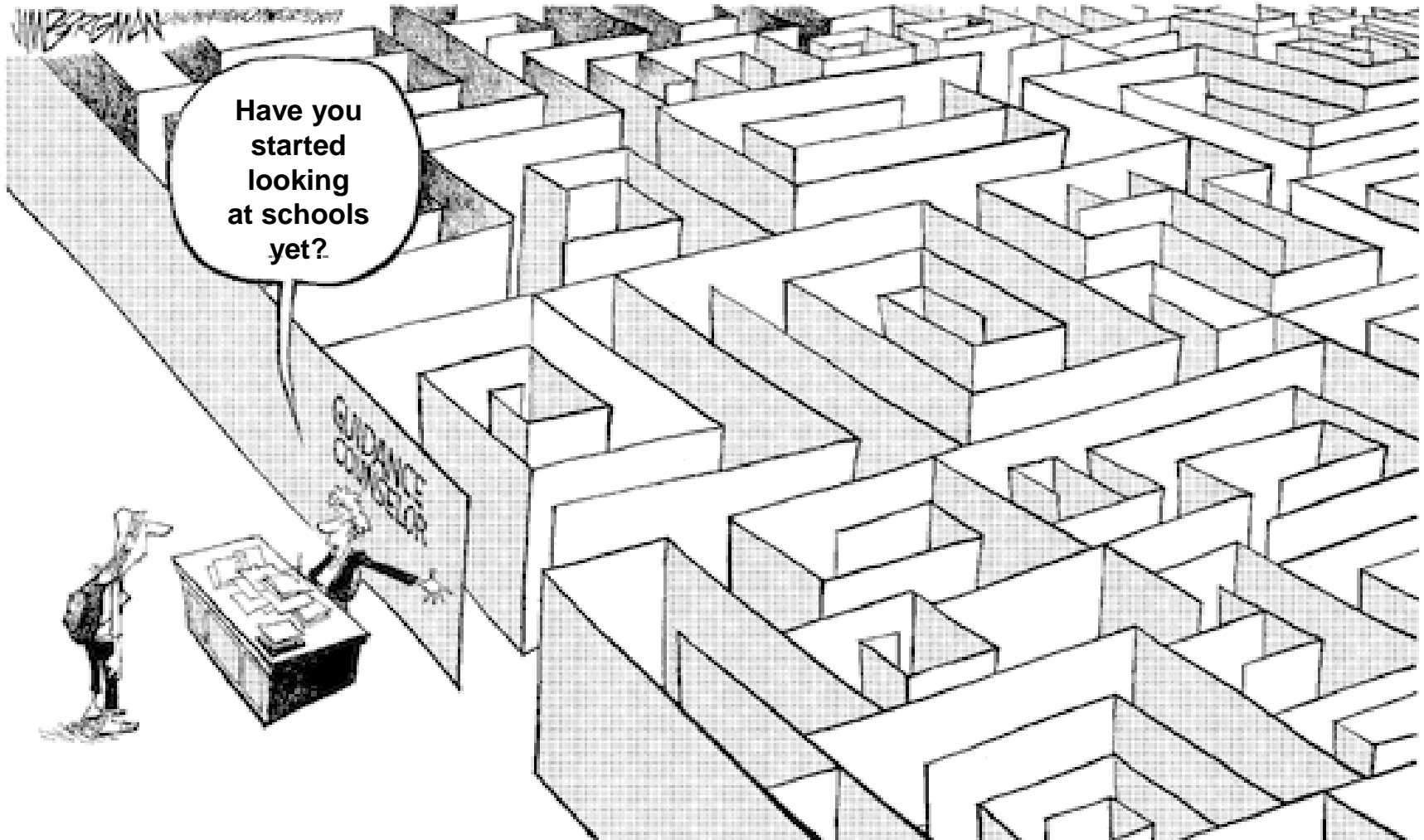




Transfer to Secondary School 2019

Choosing a school





Choosing a school

- How do I know which school is right for my child?
- Who can help me make that decision?

Choosing a school

- Talk to your child
 - find out what they want
 - consider how they will travel to school



Choosing a school

■ Visit the schools

go to the open evenings

talk to the teachers

talk to the pupils

■ When are the open evenings?

from Tuesday 28 June – Wednesday 10 October

| TRANSFER TO SECONDARY SCHOOL 2019 – DATES AND TIME OF OPEN EVENINGS IN 2019 | | |
|---|---|---|
| Thursday 28 June | 3.30 - 5pm winter 7 - 9pm Final admission 8pm | St Michael's Catholic Grammar School (Girls), Nether Street, Fritchley, N12 7NJ |
| Thursday 5 July | 3 - 9pm Final admission 7.30pm | Queen Elizabeth's School Barnet (Boys), Queens Head, Barnet, EN5 4JQ |
| Friday 12 July & Monday 16 July | 9am - 12.30pm 2pm - 5.30pm | The Hammetts Barnet School (Girls), Central Square, Hammetts Garden, Barnet, NW11 7SR |
| Tuesday 11 September | 5.30 - 8.30pm | Fritchley Catholic High School (Boys), Woodvale Lane, North Fritchley, N12 8JA |
| Thursday 13 September | 8 - 8.30pm Final admission 8pm | Queen Elizabeth's Girls' School, High Street, Barnet, EN5 5HH |
| Tuesday 18 September | 5.30 - 8pm | Hendon School, Coltgate Way, Hendon, W4 3JH |
| Tuesday 18 September | 8 - 8.30pm | London Academy, Spur Road, Edgware, HA2 9PS |
| Wednesday 19 September | 8.30 - 8pm | St James' Catholic High School, Church Ground, Colindale, NW9 5PL |
| Thursday 20 September | 4 - 8.30pm Final Admission 7.30pm | Mill Hill High School, Broomfield Crescent, Mill Hill, NW7 4LL |
| Thursday 20 September | 6.30 - 8.30pm | St Andrew's Apostolic Greek Orthodox School, North London Boerewaal Road, Finchley, N11 1EP |
| Thursday 20 September | 8 - 9pm | The Anchor Academy (Boys) School, Seppala Grove, East Finchley, N12 9JG |
| Monday 24 September | 8 - 8.30pm 8 - 8.30pm Final Admission 8pm | St Mary's and St John's (SMS) C/S School, Bennett House, Southfields Road, Hendon NW4 4DH East Barnet School, Chestnut Grove, East Barnet, EN4 8JU |
| Tuesday 25 September | 6.30 - 8.30pm 6.30 - 9pm | Christ's College Fritchley, East End Road, Fritchley, N2 9SE Coppell School (Girls), Parsley Road, Mill Hill, NW7 2SL |
| Wednesday 26 September | 4.30 - 8pm 5.30 - 8pm | Whitefield School, Clarendon Road, Cricklewood, NW2 1JH Wren Academy Fritchley, Hilton Avenue, N12 9PH |
| Thursday 27 September | 8.30 - 8.30pm 8.30 - 8pm 5.45 - 9pm Final admission 8.15pm | Bishop Douglas School, Hamilton Road, East Fritchley, N2 9SD Pratt Barnet School, Seppala Avenue, Pratt Barnet, N11 3LS JCSS (Jewish Community Secondary School), Castlewood Road, New Barnet, EN6 5DC |
| Friday 2 October | 8 - 8.30pm | The Conson School, Sommers Lane, North Fritchley, N12 8DC |
| Wednesday 3 October | 7pm | Ashmate Academy, Cecil Road, Southgate, N14 5LJ |
| Thursday 4 October | 5.30 - 8pm | The Tottenham Academy, Barnet Lane, Tottenham, N20 8AZ |
| Monday 8 October | 7 - 9pm | Saracens High School, Seppala , Lease Avenue, Colindale NW9 5SL |
| Tuesday 9 October | 6.30 - 9pm | Hammanen High (Girls), Page Street, Mill Hill, NW7 2DU |
| Wednesday 10 October | 6.30 - 9pm | Hammanen High (Boys), Holders Hill Road, Hendon NW4 1NA |

Choosing a school



School Prospectus

■ Read the school prospectus

it will have detailed information about:

- how the school is run
- which subjects are taught
- the admissions criteria

available at the open evenings

download from the school website

Choosing a school

■ Talk to the Choice Advisor

how do I contact them?

■ tel: 020 8359 7249

■ email: sendiass@barnet.gov.uk



The Choice Advice Service
Help for parents of year 6 pupils
going through secondary transfer



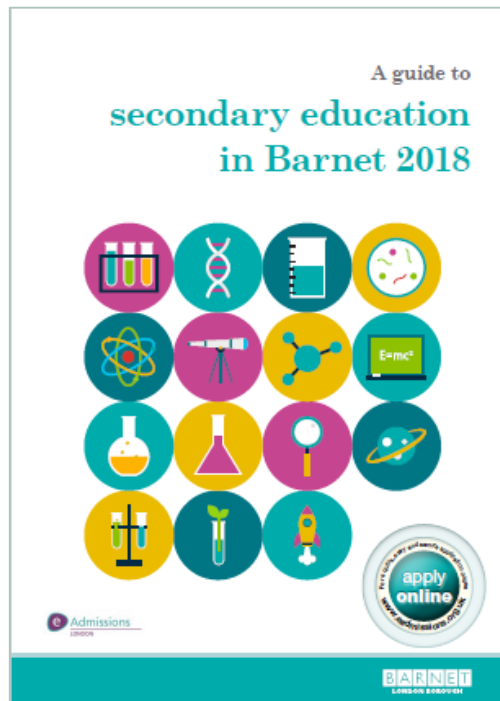
Choosing which secondary school you would prefer your child to attend is a very important decision, and can be confusing.

If your child is in year 6 you will have received information from Barnet Council's admission team about transferring to secondary school. There is a lot to think about, decisions to make and forms to fill in.

The choice advisor can help you understand the system. They can offer you free and impartial advice and support, but cannot guarantee you a place at your preferred school.

Choosing a school

- Read the secondary education guide published by your home local authority



- the 2019 guide will be available in September 2018
- download Barnet's guide at www.barnet.gov.uk/schooladmissions

Choosing a school

■ Talk to the Customer Service Team

the team can offer you advice and answer your questions

how do I contact them?

■ tel: 020 8359 7651

■ email: school.admissions@barnet.gov.uk

■ if you live outside Barnet, you will find the contact details for your admissions team in Barnet's secondary education guide



Choosing a school

- Look at exam results and Ofsted reports
 - the latest Ofsted reports are available from the Ofsted website www.ofsted.gov.uk
 - achievement and attainment tables are available at www.gov.uk/school-performance-tables

Choosing a school

- **Look carefully at the admission criteria for each school**
 - selection by aptitude**
 - faith criteria**
 - siblings**
 - distance**



Cut-off Distances 1 March 2018

| Name of School | Furthest distance offered (miles) |
|--|--|
| The Archer Academy (Priority Post Codes) | 0.314 |
| Ashmole School | 0.635 |
| Bishop Douglass Catholic | 5.387 |
| Christ's College | 4.144 |
| The Compton School | 0.659 |
| Copthall School | 4.749 |
| East Barnet School | 1.08 |
| Finchley Catholic High School (Catholic – distance) | 3.677 |
| Friern Barnet | 4.699 |
| Hendon | 4.773 |
| London Academy | 2.838 |
| Mill Hill High School | 0.916 |
| Queen Elizabeth's Girls' School | 3.237 |
| St Andrew the Apostle (Community - distance) | 1.739 |
| The Totteridge Academy | 6.691 |
| Whitefield School | 4.823 |
| Wren Academy (Community - distance) | 0.369 |

How do I apply?

■ How soon can I apply?

- the application process begins on 1 September 2018

■ Where do I apply?

- apply online at www.eadmissions.org.uk





How do I apply?

■ How many schools can I apply for?

- you can apply for up to **Six** schools
- you will rank the schools in your order of preference
- it is important to think carefully about the order as you will not be able to change it after the closing date

■ Can I apply to schools outside Barnet?

- yes, you must include all your chosen schools, whether inside or outside the borough where you live

How do I apply?

■ Realistic Preferences

- if you just apply for one school, it will not increase your chances of getting a place at the school and your child will be considered for that one school only
- if this is unsuccessful, you may miss out on an offer which could have been made at another school and you are likely to be offered a place at the nearest school with a vacancy
- It is important to make realistic school choices to increase your chances of securing a offer and avoid disappointment

How do I apply?



■ Do I need to fill in any other forms?

- all voluntary aided schools and some foundation schools, free schools & academies will ask you to complete a Supplementary Information Form (SIF)
- the SIF will ask for additional information, for example
 - faith schools will ask about church attendance and require a priest's reference
 - selective schools will ask about any medical condition that needs to be taken into account at the test and they may also require a photograph
- Jewish schools will also ask you to complete a a Certificate of Religious Practice (CRP), which must be signed by a Rabbi
- SIFs and CRPs must be returned to the individual schools



How do I apply?


■ What else do I need to provide?

□ Proof of address

- your child's permanent address must be used on the application form
- if you have moved within the last two years you will be asked to provide proof of the new address and proof that you have disposed of the previous property



Fraudulent addresses

- each year a small number of parents provide a false address to get a school place
 - in doing so they could be depriving your child of a place
 - providing false information is a criminal offence
 - if you know someone who intends to use a false address, you can report this in confidence to the Corporate Anti-Fraud Team
 - report it online at www.barnet.gov.uk/anti-fraud
 - call the fraud hotline on 020 8359 2007
- 

Selection Tests

- Schools must give parents the test results before they apply for a school place
 - applications to sit the tests should be made directly to the individual school





Selection Tests

■ When will the tests be held?

- most schools will hold tests early in the autumn term
- some schools will hold the tests in the summer term while your child is still in Year 5

Selection Tests

Barnet Schools

| | Test Dates | Deadline for Test Applications |
|--------------------------------------|--|---------------------------------------|
| Ashmole Academy | Musical Aptitude ~ Sat 9 June Music Auditions ~ Tues 3 & Wed 4 July | Fri 18 May |
| Friern Barnet School | Enhanced Arts Programme ~ Mon 2 July | Fri 22 June |
| Hendon School | Banding Tests ~ Sat 1 Dec & Sun 2 Dec | 31 October |
| The Henrietta Barnett School | Tues 4 September | Tues 17 July |
| Mill Hill County High School | Technology Aptitude Test ~ Sat 15 Sept Music Auditions ~ Sun 10, Sun 24 & Sat 30 June Dance Auditions ~ Sat 16 June & Sun 8 July | Fri 18 May |
| Queen Elizabeth's Boys' School | Thurs 20 September | Fri 13 July |
| St Mary's & St John's CE School | 1st Performing Arts Aptitude ~ To be confirmed 2nd Performing Arts Aptitude ~ To be confirmed Banding Test ~ Sat 24 Nov | Information awaited 31 October |
| St Michael's Catholic Grammar School | Fri 14 September | Tues 10 July |

Selection Tests

Schools in neighbouring local authorities

| | Test Dates | Deadline for Test Applications |
|------------------------------|--|--------------------------------|
| Dame Alice Owen's (Herts) | Entrance Exam Part 1 ~ Sat 1 September Entrance Exam Part 2 ~ Mon 3 September Musical Aptitude Test ~ Tues 4 September | Tues 19 June |
| The Latymer School (Enfield) | Sun 2 September | Tues 3 July |

How do I apply?

■ When is the closing date?

- 31 October 2018
- the online system will close at 12 midnight on 31 October



Late applications

- **What happens if I miss the deadline?**
 - late applications will not be considered until after the first round of offers
 - if there is a good reason for a late application, it may be treated as on-time
 - you must let the Admissions Team know your reason by Friday 7 December 2018



What happens next?

■ Co-ordinated admissions

- all 33 London boroughs and surrounding county councils are included in the co-ordinated admissions process
- application lists are exchanged
- offer lists are drawn up
- offer lists are exchanged





What happens next?

■ How will places be allocated?

- if the school receives more applications than places available, the published admissions criteria will be applied to decide who can be offered a place
- each school listed on the application form is considered against the admissions criteria regardless of the preference order
- your ranking order is not passed to the individual schools



Offers

- **Will I be offered more than one school place?**
 - if your child can be offered more than one school, you will be offered the school which you ranked higher**
 - the lower preference schools will be withdrawn and offered to other children**
 - no child will be offered more than one school place**

■ When will I hear?

- National Offer Day is Friday 1 March 2019
- you will be sent an email with the result of your application during the evening of 1 March
- You can then login into your eadmissions account for further information

■ Accepting offers

- places must be accepted or declined online by 15 March 2019



No Offer?

- **What happens if I don't get any of my preferred schools?**
 - your child will be allocated a place at the nearest school with a vacancy
 - remain on the waiting lists
 - appeal for a place
 - join waiting lists for other schools



Appeals

- **Every parent has the right of appeal**
- **appeals are heard by an independent panel**
- **you will have the opportunity to present your case in person**
- **you will need to convince the panel that your child's needs are more important than the school's need to limit the admission number**
- **appeals are unlikely to be successful unless there are exceptional grounds**



Transfer to Secondary School 2019